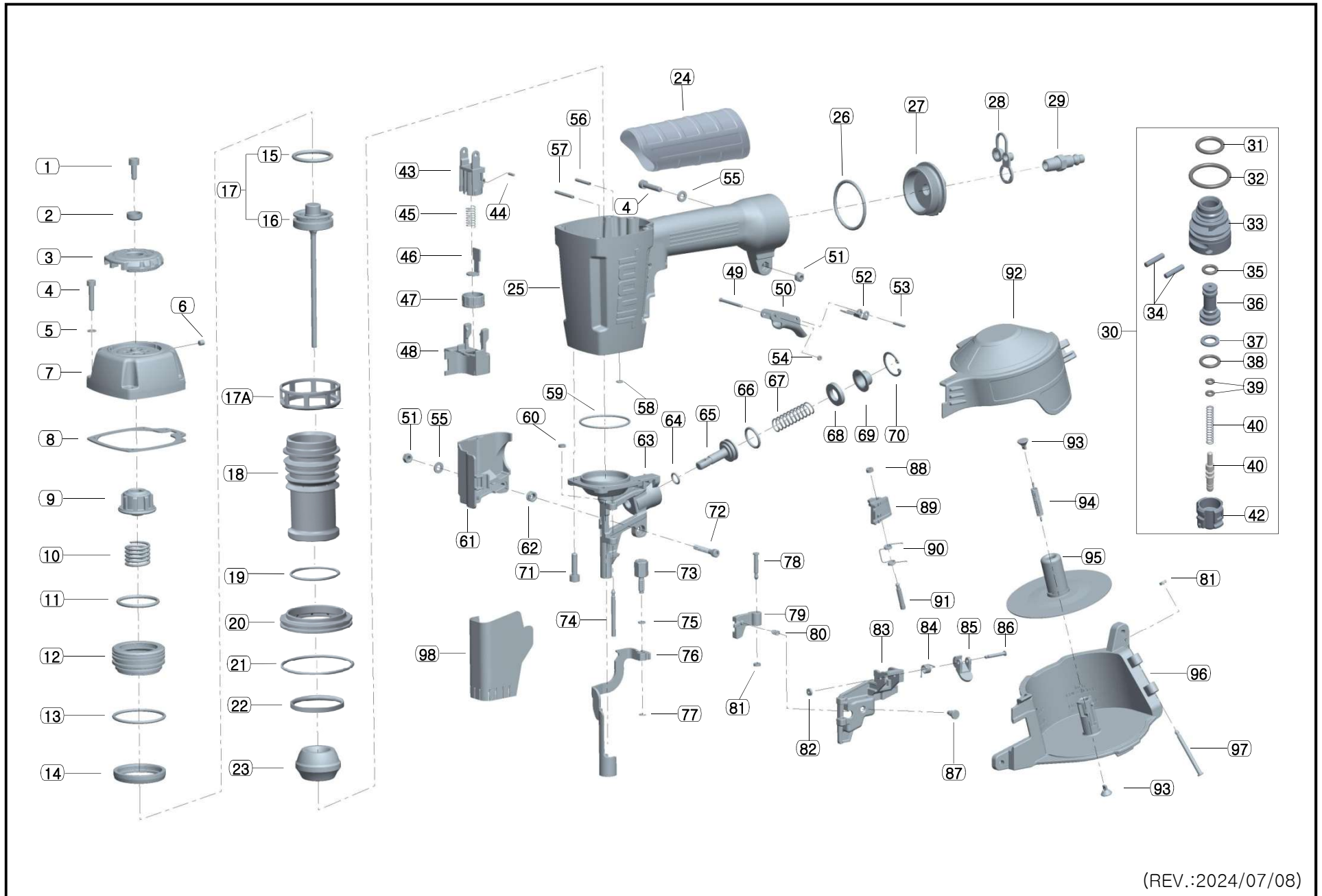


EXPLODED DIAGRAM OF JN50C



JN50C (1-1/16" TO 2" INDUSTRIAL COIL NAILER)

NO.	DESCRIPTION	PART NO.	QTY	NO.	DESCRIPTION	PART NO.	QTY	NO.	DESCRIPTION	PART NO.	QTY
1	BOLT (M6X15L)	ZN-06-150	1	33	VALVE	NV-V-003	1	66	FEED PISTON O-RING (SLIP)	JN45R-G-013	1
2	EXHAUST COVER WASHER	CT64-C-007	1	34	VALVE PIN (ø3x14.2L)	NV-V-013	2	67	FEED PISTON SPRING	JN50C-G-016	1
3	EXHAUST COVER	JN65S-C-003	1	35	VALVE PLUNGER O-RING (UP)	NV-V-007	1	68	FEED PISTON BUMPER	JN45R-G-015	1
4	BOLT (M5X25L)	Z-05-250	5	36	VALVE PLUNGER	NV-V-004	1	69	FEED PISTON CAP	JN45R-G-017	1
5	SPRING WASHER (for M5)	W-05	4	37	VALVE PLUNGER O-RING (MID)	CT64-V-005	1	70	SNAP RING (ø24)	IS-24	1
6	SET SCREW (M5X5L)	ZS-05-050	1	38	VALVE PLUNGER O-RING (LOW)	NV-V-006	1	71	BOLT (M6X22L)	ZN-06-220	4
7	CAP	JN50C-C-001	1	39	PLUNGER O-RING	CT64-V-008	2	72	BOLT (M5X30L)	Z-05-300	1
8	GASKET	JN65S-C-002	1	40	PLUNGER SPRING	CT64-V-009	1	73	DEPTH BAR	JN65S-S-006	1
9	PISTON STOPPER	JN45R-H-005	1	41	PLUNGER	NV-V-110	1	74	DOOR PIN	JN50C-G-003	1
10	HEAD VALVE SPRING	JN55C-H-006	1	42	PLUNGER CAP	NV-V-112	1	75	STOPPER O-RING	JN65S-S-008	1
11	HEAD VALVE O-RING (IN)	JN45R-H-003	1	43	DEPTH HOUSING A	JN65S-S-003	1	76	CONTACT ARM	JN50C-S-P001	1
12	HEAD VALVE	JN55C-H-001	1	44	ROLL PIN (ø2.5x8L)	R-25-80	2	77	E-RING (ø3)	E-030	1
13	HEAD VALVE O-RING (OUT)	JN45R-H-004	1	45	CONNECTOR SPRING	JN65S-S-002	1	78	CHECK PAWL PIN	JN50C-G-009	1
14	HEAD VALVE SEAL	JN45R-H-002	1	46	CONNECTOR	JN65S-S-005	1	79	CHECK PAWL	JN50C-G-007	1
15	PISTON O-RING	JN50C-P-003	1	47	DEPTH DIAL	JN65S-S-007	1	80	CHECK PAWL SPRING	JN55C-G-008	1
16	PISTON ASSEMBLY	JN50C-P-P002	1	48	DEPTH HOUSING B	JN65S-S-004	1	81	PIN RETAINER	JN45R-M-008	2
17	PISTON SET	JN50C-P-P001	1	49	TRIGGER PIN	FN21/90-T-008	1	82	PIN RETAINER	JN100C-G-022	1
17A	COLLAR	JN45R-A-004	1	50	TRIGGER A	FN34/90-T-001	1	83	DOOR	JN50C-G-002	1
18	CYLINDER	JN50C-A-001	1	51	LOCK NUT (for M5)	NN-05	2	84	DOOR LATCH SPRING	JN100C-G-011	1
19	CYLINDER O-RING	JNS45-A-005	1	52	TRIGGER B	JN65S-T-002	1	85	DOOR LATCH	JN100C-G-010	1
20	CYLINDER GUIDE	JN65S-A-002	1	53	ROLL PIN (ø2.5x16L)	R-25-160	1	86	DOOR LATCH PIN	JN100C-G-021	1
21	CYLINDER GUIDE O-RING	JPS38R-A-006	1	54	PIN STOPPER O-RING	CT64-M-008	1	87	HOOK DUST COVER	JN70C-S-005	1
22	SUPPLY HOLE SEAL	JN65S-A-007	1	55	RING PLATE	JN65S-M-017	2	88	PIN RETAINER	JN70C-G-018	1
23	BUMPER	JN65S-A-003	1	56	ROLL PIN (ø3x22L)	R-30-220	1	89	FEED PAWL	JN50C-G-004	1
24	GRIP	JN2190-B-004	1	57	ROLL PIN (ø3x30L)	R-30-300	1	90	FEED PAWL SPRING	JN50C-G-005	1
25	BODY	JN50C-B-001	1	58	FEEDING LINE HOLE O-RING	JN45R-B-009	1	91	FEED PAWL PIN	JN70C-G-006	1
26	END CAP O-RING	JNS45-B-003	1	59	NOSE O-RING	JN65S-B-010	1	92	MAGAZINE COVER	JN50C-M-002	1
27	END CAP	JNS45-B-002	1	60	PIN RETAINER	CS26/38-G-008	1	93	SPRING HOOK	JN70C-M-015	2
28	PLUG CAP	9032-B-006	1	61	PROTECTOR	JN50C-S-010	1	94	PLATFORM SPRING	JN50C-M-009	1
29	AIR PLUG	9032-B-005	1	62	PROTECTOR BUSHING	JN65S-S-014	1	95	PLATFORM	JN50C-M-P002	1
30	VALVE SET	JN55C-V-P001	1	63	NOSE	JN50C-G-001	1	96	MAGAZINE BODY	JN50C-M-001	1
31	VALVE O-RING	NV-V-001	1	64	FEED PISTON O-RING (SEAL)	JN45R-G-014	1	97	MAGAZINE PIN	JN55C-M-007	1
32	PLUNGER CAP O-RING	CT64-V-011	1	65	FEED PISTON	JN50C-G-012	1	98	DUST COVER	JN50C-S-004	1

** All the parts of nailer can be changed for improvement and re-design without announcement.

(REV. : 2016/06/14)